

# Acron™ MP5-0<sup>NP</sup> ECONOMIC TYPE SPOT WELDER

MP5-0<sup>NP</sup>  
SPOT WELDER

RELIABLE EQUIPMENT FOR SMALL & MEDIUM SIZE PRODUCTION PURPOSE



computer  
inside

Consumer Products manufacture facing thousands of electrical connection joints through out the assembly process with generic miniature metal parts connection to lead wire etc. to be the electrical conductor becomes increasingly popular nowadays. The ACRON MP5-0NP is vital welding equipment in particular for various range of thin metal connection i.e. iron, stainless steel, copper and aluminum.

Economic version ACRON MP5-0NP is suitable for handling small and medium lots spot welding process, it's unique light weight portable design for easy to move around and set up within minutes at wherever the production process is required, to have electrical connection be assembled as demanded by the sequential process flow operation. ACRON MP5-0NP is a desktop space saving spot welding equipment, operating with pneumatic and single phase AC power source, for precision, clean and good quality weld enhancing both your production yield and efficiency.

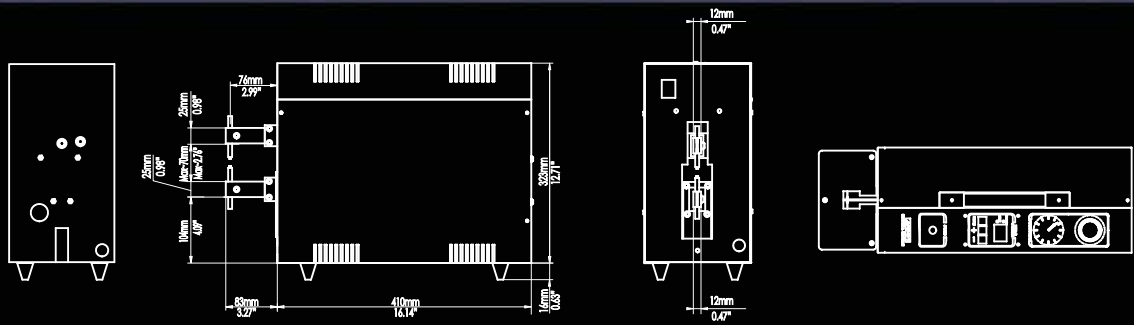
ACRON MP5-0NP is user-friendly. The welding process is fully controlled by a special developed 8-bit microprocessor. Both the electronic and power circuits are built with protect circuitry to ensure the welding operation is trouble free even the input electricity power network voltage is unstable. In case the equipment is working under a significantly fluctuated electricity power network, ACRON MP5-0NP has built-in with an automatic voltage and welding power compensation stabilizer to guarantee the output welding energy is consistence insuring good quality and reliable welded joint.



ISO9001: 2000  
Cert No.: 121 0025 097

PORON®

## OVERALL DIMENSIONS



## FEATURES

### \* Built-in 8 Bit Micro Processor

Advance unique software application to achieve reliable and quality spot-weld joints.

### \* Portable Size Design

Unique light weight with overall dimension only 49.3x17.4x33.9 cm (19.40x6.85x13.35") (H x D x W), and weight only 27 kgs (59.6 lbs), operated by single-phase AC power with plug in pneumatic socket.

### \* Closet control Panel

Closet control panel built inside the cabinet to prevent shaking or vibration due to operation and/or moving the equipment around causing undesired setting occurred. The setting method is simple. The operator requires less training and can master the machine efficiently.

### \* Self-contained Digital Display and Memory Setting

Welding data is digitally set and precisely displayed. All setting is memorized by the built-in battery free memory system.

### \* Pneumatic Operation

Fully pneumatic operation reduce operator(s) fatigue ensure high productivity.

### \* Feasibility

Suitable for variety range of metal such as copper, bronze, aluminium, stainless steel, nickel alloy and tiny lead wire connection to conductive tabs.

### \* Safety Alarm System

Built-in self-alarm system whenever the machine is being misused and generated abnormal heat, the alert sound will automatically switch "ON" to alert the operator to stop the welding operation and have the maintenance technician to check the machine before being further damaged.

### \* Easy Maintenance

The electronic control circuit is designed with plug in module board. In case of faulty simply switch off the main and replace the module board to sustain production.

### \* Optional Automatic Power Compensation Unit Set

In the event of significant unstable or poor electricity power network, it is highly recommend to install this optional set. Once this APCU set is installed, the built-in CPU frequently scans and monitors the input voltage. Once the input voltage is up and/or down, the CPU will trigger the APCU circuit and automatically adjust the welding energy within millisecond to ensure steady reliable and quality weld joints operation.

## TECHNICAL SPECIFICATIONS

MODEL	MP5-0NP
Power	5KVA
Rate Voltage	220VAC / 110VAC±10%
Frequency	50 / 60 Hz
Primary Current	15-20A
Duty cycle	5 %
Weld Pulse	0-99
Weld Energy Steps	0-99
Digital display	7 segment x 2
Secondary Voltage (open)	3.4V
Computer	8 bit microprocessor
Memory	EE Prom
Cylinder Dia	9.8 mm (0.386") D
Stoke	22 mm (0.87")
Electrode Arm Apart	83 mm (3.27")
Electrode Dim	6 mm (0.24") D X 80mm (3.54")
Length of Welding Arm	76 mm (2.99")
Electrode Pressure (Max.)	5.2 Kgs (11.5 lbs)
Operating Pressure (Max.)	7 Kg/sq. cm (99.6 psi)
Operating Pressure (Min.)	2 Kg/sq. cm (28.5 psi)
Air consumption / 1000 stokes	4300 cu. cm (262.4 cu. in)
Air Input Hose	5/16" BSP
Overall Dim	49.3x17.4x33.9 cm (19.40x6.85x13.35")
Net Weight	27 Kgs (59.60 lbs)
Packing Size	59x25x42 cm (23.22x9.84x16.54")
Gross Weight	28.5 Kgs (62.83 lbs)
Package Material	2 Ply Carton with polyfoam Layer



Due to our policy of continuous product improvement, the specifications are subject in change without notice.